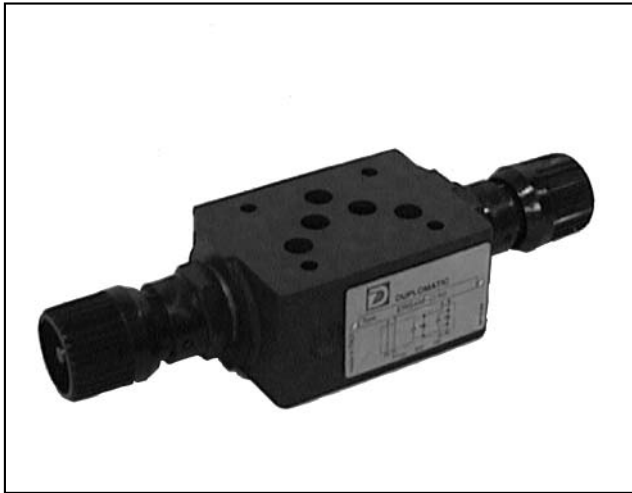




**DIPLOMATIC**  
HYDRAULICS

64 300/197 ED



# ERS4M

## FLOW RESTRICTOR VALVE

### SERIES 40

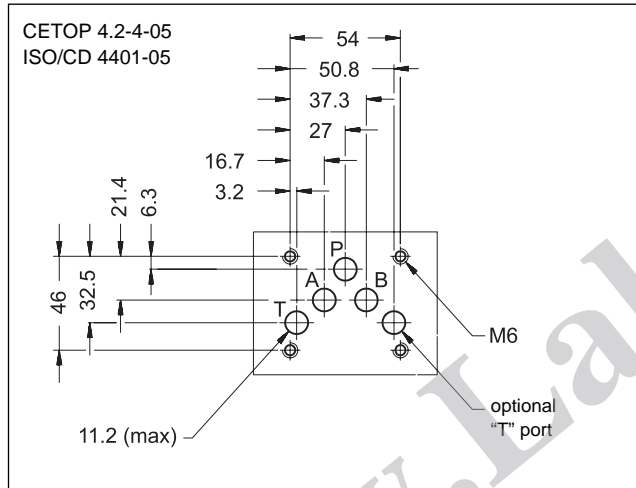
#### MODULAR VERSION

#### CETOP 05

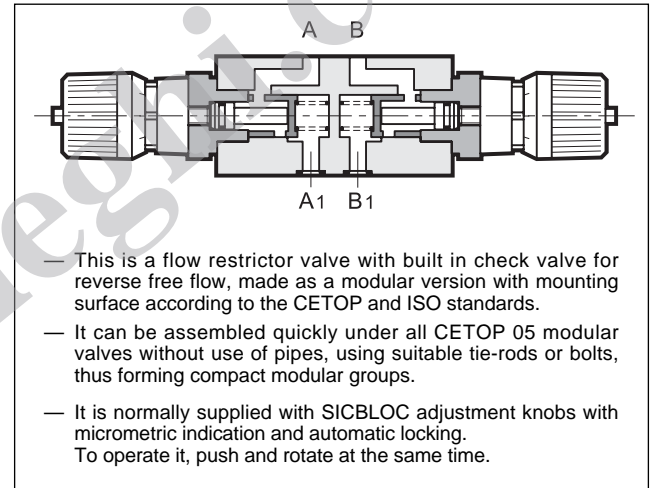
**p** max 320 bar

**Q** max (see performance ratings table)

#### MOUNTING INTERFACE



#### OPERATING PRINCIPLE



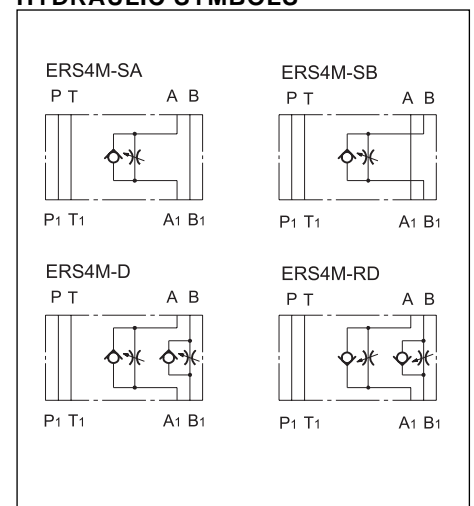
#### CONFIGURATIONS (see Hydraulic symbols table)

- Configuration "SA": is used in cases where control of the flow exiting from the actuator on line A is desired.
- Configuration "SB": is used in cases where control of the flow exiting from the actuator on line B is desired.
- Configuration "D": independently controls the flow exiting from the two chambers of the actuator.
- Configuration "RD": independently controls the flow entering the two chambers of the actuator.
- All configurations have a built in check valve that allows reverse free flow (cracking pressure of 0,5 bar).

#### PERFORMANCE RATINGS (measured with mineral oil of viscosity 36cSt at 50°C)

Maximum operating pressure	bar	320
Check valve cracking pressure	bar	0,5
Maximum flow rate in the controlled lines	l/min	80
Maximum flow rate in the free lines	l/min	100
Ambient temperature range	°C	-20 ÷ +50
Fluid temperature range	°C	-20 ÷ +70
Fluid viscosity range	cSt	2,8 ÷ 380
Recommended filtration	µm absolute	≤ 25
Recommended viscosity	cSt	25
Mass:	kg	3,1

#### HYDRAULIC SYMBOLS





# ERS4M

## SERIES 40

### 1 - IDENTIFICATION CODE

E	R	S	4	M	-	/	/	40	/	
---	---	---	---	---	---	---	---	----	---	--

Flow restrictor valve with check valve for reverse free flow

CETOP 05 size

Modular version

Configurations:  
**SA:** meter out control on line A  
**SB:** meter out control on line B  
**D:** meter out control on lines A and B

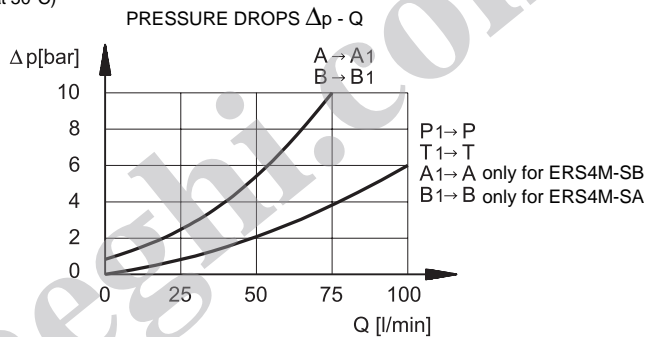
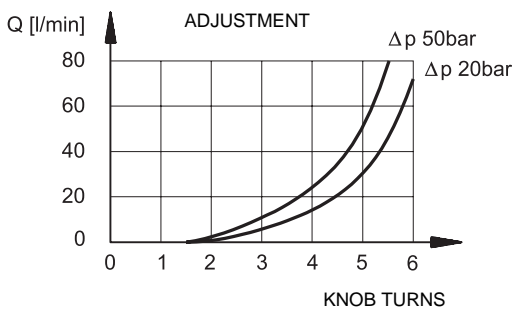
**RD:** meter in control on lines A and B

**S =** hexagonal head adjustment screw (omit for adjustment with SICBLOC knob)

Seals: omit for mineral oils  
**V =** viton for special fluids

Series No. (the overall and mounting dimensions remain unchanged from 40 to 49)

### 2 - CHARACTERISTIC CURVES (values obtained with viscosity of 36 cSt at 50°C)



### 3 - HYDRAULIC FLUIDS

Use mineral oil-based hydraulic fluids, with the addition of suitable anti-frothing and anti-oxidizing agents. For the use of other types (water glycol, phosphate esters and others), please consult our technical department.

### 4 - OVERALL AND MOUNTING DIMENSIONS

dimensions in mm

ERS4M-\*/S

NOTE: Rotate clockwise to increase flow

1	Mounting surface with sealing rings: 5 OR type 2050
2	Hexagonal head adjustment screw: <b>S</b> Spanner 13



**DIPLOMATIC OLEODINAMICA SpA**  
 20025 LEGNANO (MI) - P.le Bozzi, 1 / Via Edison  
 Tel. 0331/472111-472236 - Fax 0331/548328